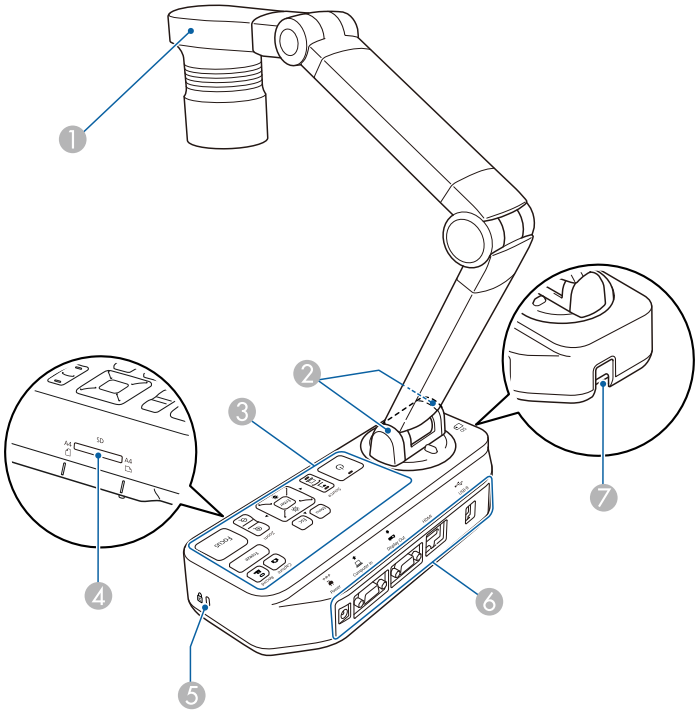


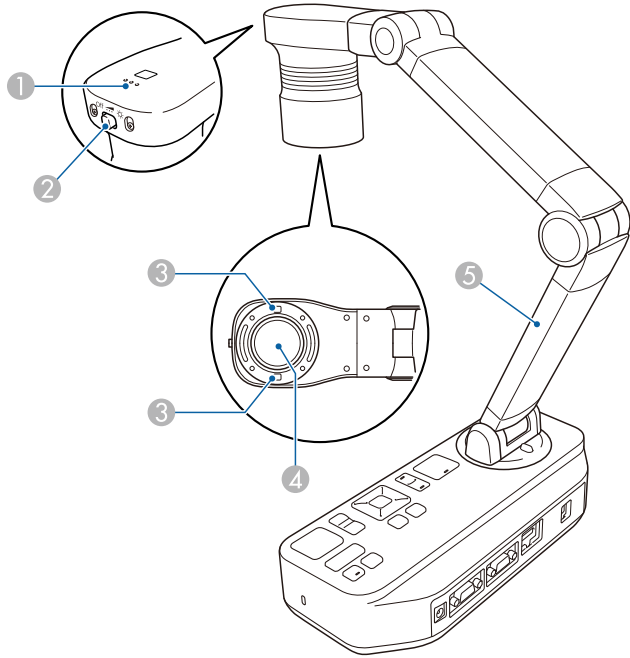
Top/Side/Rear




| Name | | Function |
|------|-----------------|--|
| 1 | Camera head | "Camera Head" p.12 |
| 2 | Remote receiver | Receives signals from the remote control. |
| 3 | Control panel | "Control Panel" p.13 |
| 4 | SD card slot | Lets you save and display images on an SD card. "Displaying Saved Images as a Slideshow" p.30 |
| 5 | Security slot | The security slot is compatible with the Microsaver security system manufactured by Kensington. |
| 6 | Interface | "Interface" p.14 |

| Name | | Function |
|------|-----------------------------------|---|
| 7 | Security cable installation point | Lets you attach a commercially available security cable to lock the document camera in place. |

Camera Head



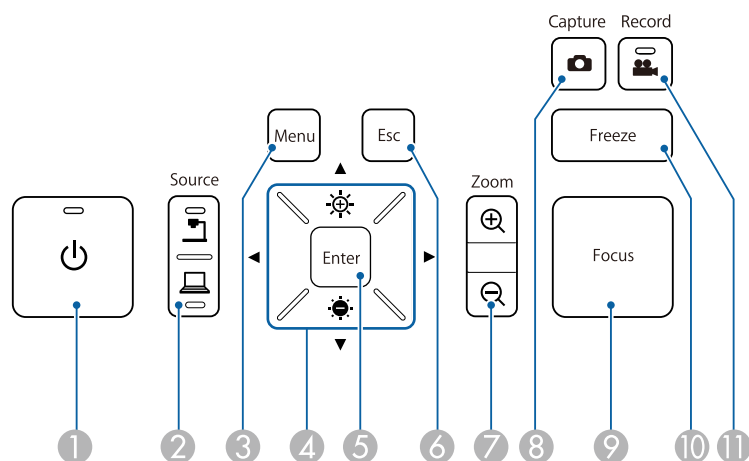
| Name | | Function |
|------|---|--|
| 1 | Microphone | Captures sound when you record a video. |
| 2 | [] Lamp switch | Changes the LED lamp status in three steps: bright, dim, and off. |
| 3 | LED lamp | Provides additional light when there is not enough light on your document. |
| 4 | Camera lens | Captures the image. |

| Name | Function |
|--------------|--|
| 5 Camera arm | Extends or retracts to adjust the height of the camera head. |

Attention

Do not rub the lens with harsh materials or subject it to shock, as it can be easily damaged. Use a soft cloth to gently wipe the lens.

Control Panel



| Name | Function |
|---|--|
| 1 [Power] button | Turns the document camera on or off. |
| 2 [Source] button [SD card] [Laptop] | Switches the output image to the device connected to the Display Out port. [SD card]: Projects images (live or on an SD card) from the document camera. [Laptop]: Projects images from a computer connected to the Computer In port. |

| Name | Function |
|--------------------------------------|---|
| 3 [Menu] button | Opens and closes the menu. |
| 4 [Up] [Down] [Left] [Right] buttons | When the menu screen is displayed, pressing these buttons selects menu items and setting values. |
| [Brightness] buttons | Adjusts the brightness of the image if pressed while projecting images from the document camera. |
| [Focus] buttons | Adjusts the focus of the image if pressed while projecting images from the document camera. |
| 5 [Enter] button | <ul style="list-style-type: none"> When the menu is displayed, pressing this button confirms the current item. Displays the SD Card menu and images on the SD card if pressed while projecting live images. "Displaying a Slideshow (SD Card Viewer Function)" p.33 |
| 6 [Esc] button | Stops the current function. When the menu is displayed, pressing this button moves to the previous menu level. |
| 7 [Zoom] button [+] [-] | Enlarges or reduces the image without changing the projection size. |
| 8 [Capture] button [Camera] | Captures still images. "Saving Images" p.31 |
| 9 [Focus] button | Focuses the image automatically. The document camera cannot focus on objects that are approximately 10 cm (4 inches) or less from the surface of the camera lens. |
| 10 [Freeze] button | Freezes live images. Press the button again to resume projection. |
| 11 [Record] button [Record] | Starts and stops video recording. |